



INTRODUCING THE CASTLE PEAK

BY TINY MOUNTAIN HOUSES

RECREATIONAL VEHICLE – RVIA CERTIFIED – DOT APPROVED



THIS BEAUTIFUL HAND CRAFTED HOME IS WELL APPPOINTED WITH

STANDARDS

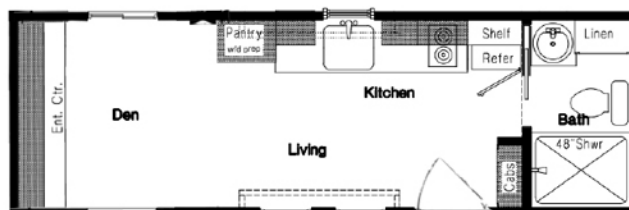
- LP Smart Panel Exterior Siding
- Metal Roof w/ 40 yr. manufacturer's warranty
- White bead board interior walls and ceiling
- Pine tongue & groove flooring –both lofts
- One piece 48" fiberglass shower
- Electric wall mounted heater
- Prep for ceiling fan
- Nickel wall sconces throughout
- Whole house wrap –exterior

- Dual-glazed, vinyl, low-e, argon gas – filled windows
- Z metal flashing on all windows
- Insulation R-11 walls, ceiling & floor
- Exhaust fans in kitchen & bath
- 50 amp main electrical service with power cord
- Laminate countertops throughout
- Wooden ladder for Queen loft
- 2 burner electric glass top cooktop

OPTIONS

- Extended floor plan to 25' with enlarged den & main loft
- Custom wood/metal sweeping ladder
- White bead board cabinets and overheads
- Contemporary satin nickel cabinet pulls
- Extended height overhead cabinets
- Elongated toilet
- Gooseneck kitchen faucet
- Fully tiled kitchen backsplash
- Apartment sized stainless steel refrigerator

- Cedar siding accent on the exterior
- Fully lofted roof/ ceilings
- Large built-in entertainment center
- Kitchen pantry cabinet w/ prep for combo w/d
- Enlarged den windows. Transoms & 30x80 windows
- Insulated single light French entry door
- Propane water heater – 10 gallon
- Propane prep
- Prepped for a mini split system
- Pocket door to bath



STANDARD BASE PRICE,

\$ 58,495

+ OPTIONS

\$ 19,105

TOTAL,

\$ 77,600

8'6" WIDE x 25' LONG x 13'6" TALL
APPROXIMATELY **335 SQ. FT.**
8,450 LB. DRY WEIGHT

*Plus freight and applicable taxes. Furnishing, bed, couch, T.V. & décor items not included

800.605.8329 | INFO@TINYMH.COM | WWW.TINYMOUNTAINHOUSES.COM