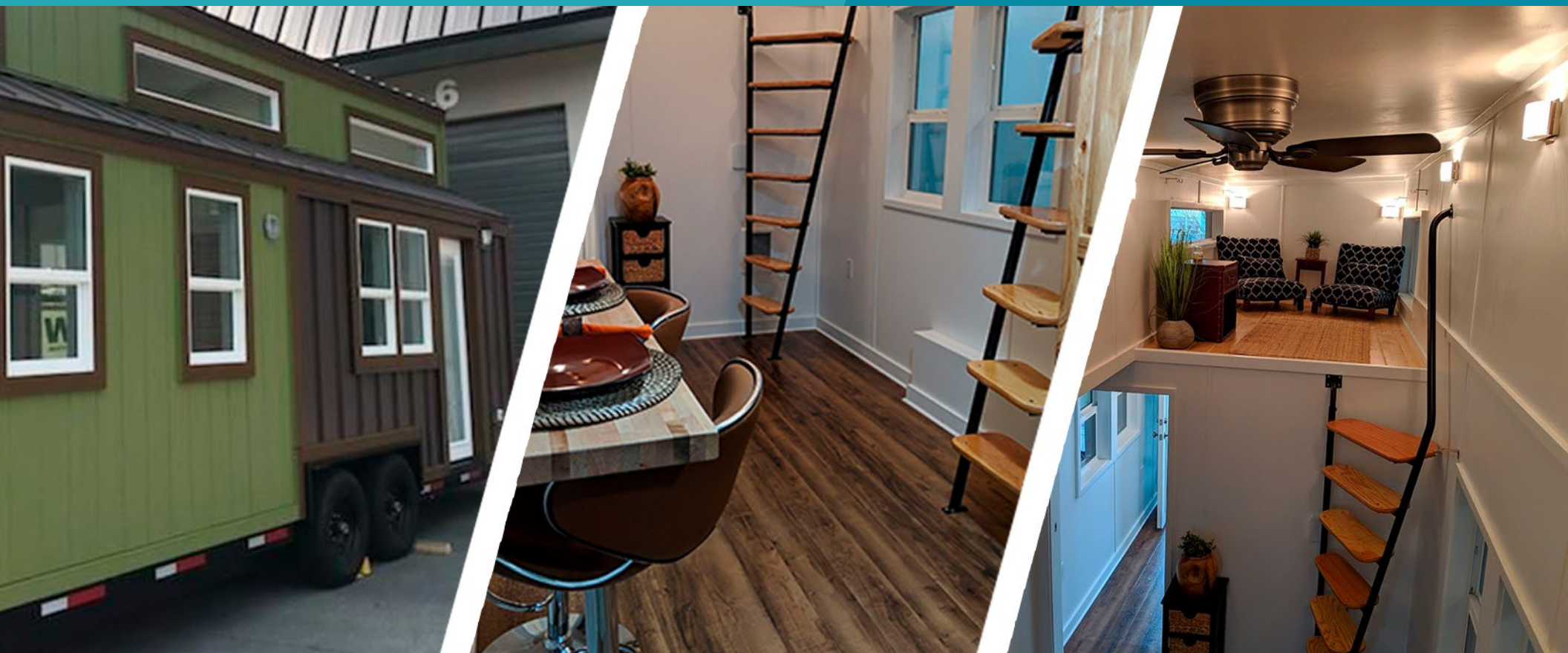




# INTRODUCING THE MT BAKER CUSTOM 28'

BY TINY MOUNTAIN HOUSES  
RECREATIONAL VEHICLE – DOT COMPLIANT

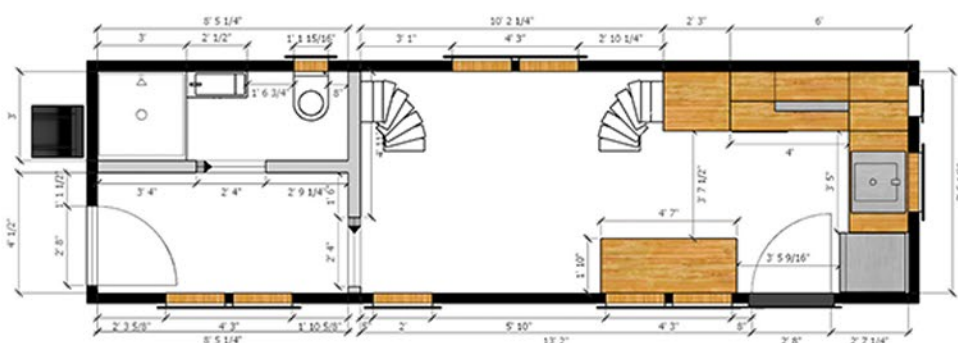


## THIS BEAUTIFUL HAND CRAFTED HOME IS WELL APPOINTED WITH STANDARDS

- Metal standing seam roof
- Metal exterior accent
- Whole house wrap
- Single propane tank with a cover on hitch end
- White beadboard walls and ceiling
- Stainless steel deep kitchen sink
- Pull out brushed nickel kitchen faucet
- Laminate kitchen backsplash & counters
- 3 way electrical switches in sleeping lofts
- Pine tongue and groove flooring – both lofts
- Stainless steel apartment sized refrigerator
- Wire and brace for fan & light 3-way switch
- Brushed nickel wall sconces
- Track lighting in kitchen
- Dual glazed, tempered, vinyl low-e, white residential windows
- Metal flashing on all windows
- Insulation, R-15 in walls and ceiling, R-13 in the floor
- LP 40 yr hardboard siding
- Brushed nickel door hardware
- 30 amp electrical service w/cord
- Exterior vented exhaust fans in kitchen & bath
- Kitchen drawers with full extension drawer guides
- Wall mounted electric heater with separate thermostat
- 1 year manufacturer's warranty

## OPTIONS

- 6/12 Pitch Shed roof w/custom loft designs
- Full OSB exterior sheathing
- Two entries, both with Single light French entry door and built-in blinds
- On demand propane hot water heater
- Pocket door to bath and media rooms
- Smoothwall white interior finish
- 36" One piece fbgls shower
- Dual flush toilet
- Medicine cabinet in bathroom
- Upgrade window package
- TP smart switches throughout
- Two wood & metal sweeping ladders
- Two burner built-in induction cooktop
- Stainless steel dishwasher
- Built-in stainless steel convection/microwave rangehood
- Upgrade raised panel Hickory cabinets
- Custom butcher block murphy table
- Nest thermostat
- Custom storage compartments
- Extended kitchen cabinetry
- Prepped for ethernet
- Pantry prepped for w/d
- Full OSB exterior sheathing



8'6" W X 26' L X 13'6" T  
APPROXIMATELY 364 SQ. FT.  
13,500 LB. DRY WEIGHT

TOTAL\*  
**\$ 89,000**

FOR MORE INFORMATION PLEASE CALL (800) 605-8329  
LOCATIONS IN ROSEVILLE CA AND SALEM OR

\*Total cost (Not Incl freight or taxes)

800.605.8329 | INFO@TINYMOUNTAINHOUSES.COM | WWW.TINYMOUNTAINHOUSES.COM