



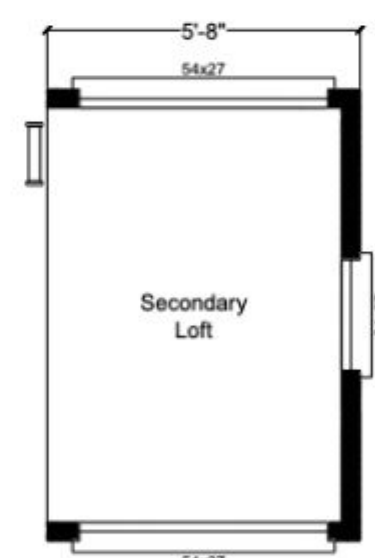
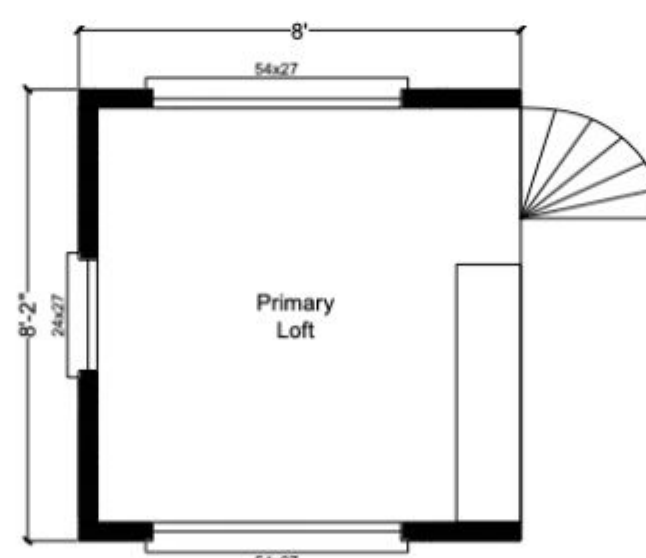
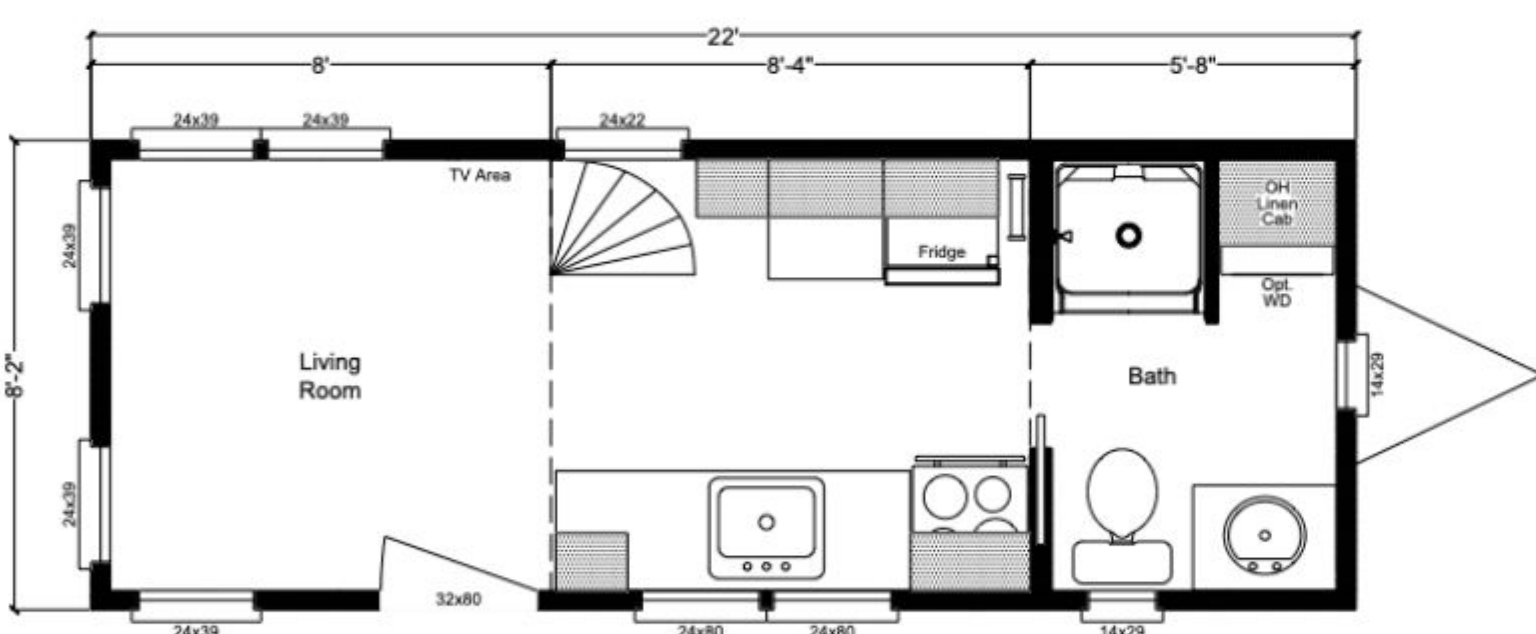
The Chinook Peak

By Tiny Mountain Houses

Recreational Vehicle- DOT Compliant



This beautiful hand crafted MODEL home is well appointed with



The following

- Metal standing seam roof 40 Yr
- Whole house wrap
- White smooth finish walls Kitchen, lofts, and bath with Birch custom ply in LRM w/ ebony stained trim
- Fiberglass 1- piece shower
- Extended-height overhead cabinets
- 3-way electrical switches to loft lighting
- Pine tongue and groove flooring – lofts
- Living room with Pine 4 x 4 clear coat beams and T & G ceiling
- The main ceiling is finished w/ beautiful clear coated blue pine
- Ceiling fan installed
- Brushed nickel slim wall sconces
- Track lighting in the kitchen
- Dual glazed, vinyl Low-E, Argon gas white residential windows
- Insulation, R-15 in walls and ceiling, R-13 floor
- LP hardboard siding 40 yr - Sherwin Williams paint
- Brushed nickel interior door hardware
- Exterior vented exhaust fans in kitchen & bath
- Drawers with full extension guides
- Residential flush toilet
- Single light entry door with built-in blinds & custom paint
- Upgrade satin nickel contemporary entry door lockset
- Upgraded porch light fixture
- On-demand propane tankless hot water heater
- Ductless mini split heating/ cooling system 12,000 BTU
- 50 Amp 220 V electrical system w/25' ship to shore power cord
- 3 cm Quartz kitchen counters
- Full tile kitchen custom backsplash
- 9" deep undermount stainless steel kitchen sink
- Commercial spring-style faucet brushed nickel finish
- Freestanding stainless range, propane w/cast iron grates
- Stainless steel vented microwave rangehood
- Stainless steel apartment size top freezer refrigerator
- White shaker cabinets
- Custom matt black cabinet hardware
- Soft close cabinet doors & drawers
- Washer/dryer combo in bath
- Ladder to the second loft with w/chunky step treads
- Beveled edge mirrored medicine cabinet in bathroom and oval contemporary mirror over sink
- Upgrade bathroom backsplash
- Ladder to the second loft with w/hardware
- LED lighting throughout
- Metal flashing on all windows

8'6" wide x 22' long x 13'5" tall
Approximately 304 sq. ft. 8,300 lb. dry weight

Total
\$105,650

*Price does not include doc fees & applicable taxes. Furnishings and decor not included