



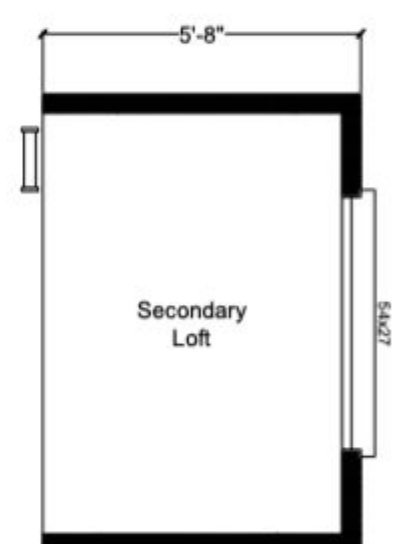
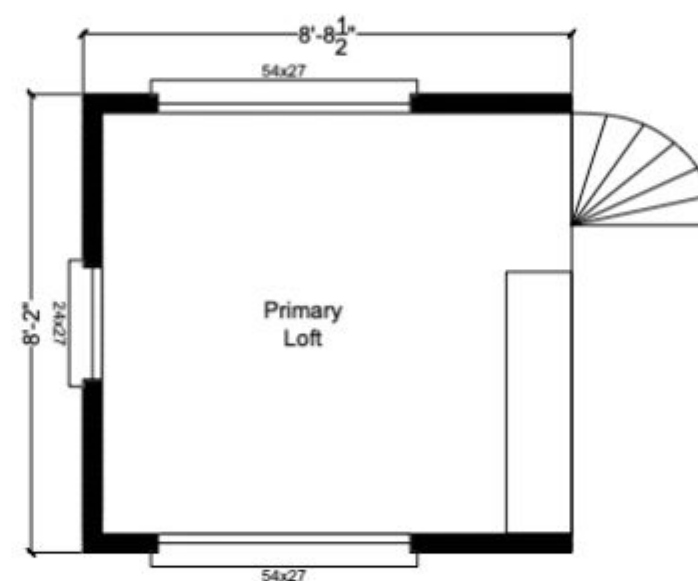
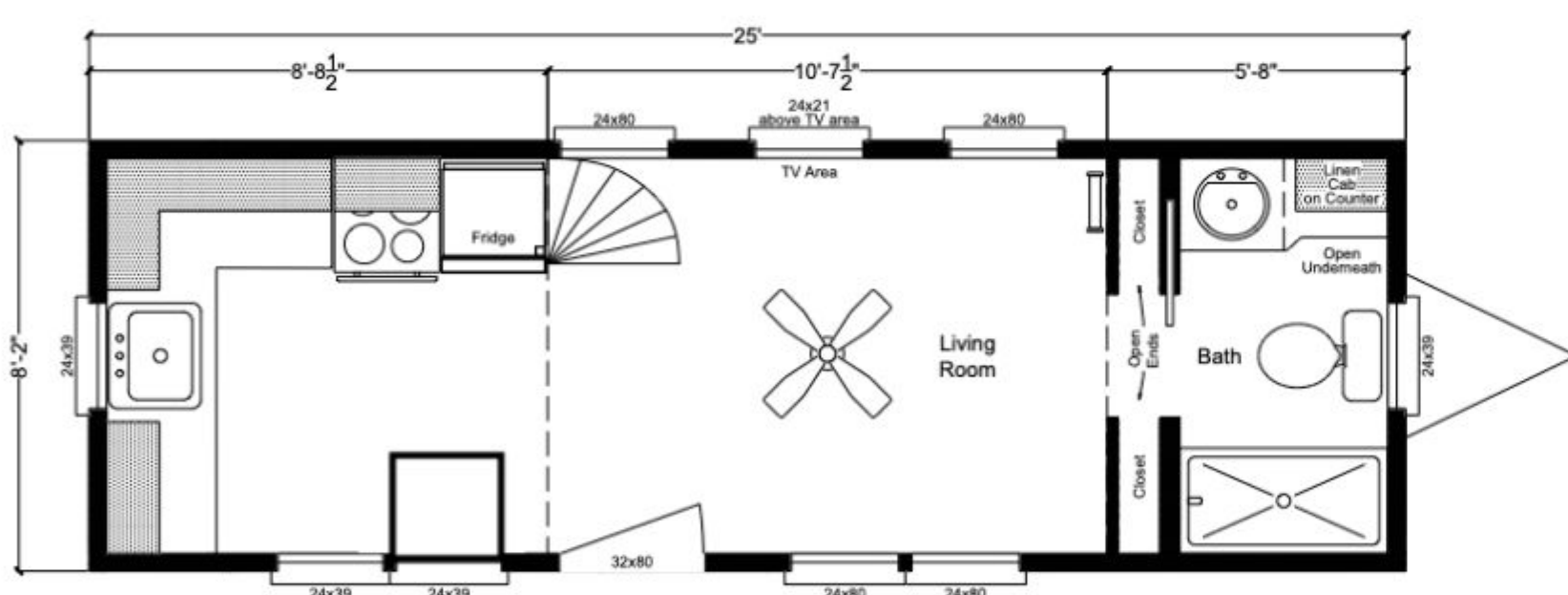
The Lassen Peak

By Tiny Mountain Houses

Recreational Vehicle- DOT Compliant



This beautiful hand crafted MODEL home is well appointed with



The following

- Metal standing seam roof 40 Yr
- Whole house wrap
- White beadboard finished walls and bath ceiling
- 3-way electrical switches to loft lighting
- Pine tongue and groove flooring - lofts
- Living room with Pine 4 x 4 clear coat beams and T & G blue pine ceiling
- Ceiling fan installed
- Brushed nickel slim wall sconces
- Can lighting in the kitchen & Bath
- Dual glazed, vinyl Low-E, Argon gas white residential windows
- Insulation, R-15 in walls and ceiling, R-13 floor
- LP hardboard siding w/board n batten 40 yr - Sherwin Williams paint
- Brushed nickel interior door hardware
- Exterior vented exhaust fans in kitchen & bath
- Drawers with full extension guides soft close doors and drawers
- Residential flush toilet
- Single light entry door with built-in blinds & custom paint
- Upgrade satin nickel contemporary thumb latch entry door lockset
- Dual Porch lights with upgrade fixtures
- On-demand propane tankless hot water heater
- Ductless mini split heating/ cooling system 12,000 BTU
- 50 Amp 220 V Electrical system w/25' ship-to-shore power cord
- 43" Flat screen LED TV with swivel wall mount - LRM
- Curved face wall-mounted electric fireplace - LRM
- 3 cm Quartz kitchen counters
- Full subway tile kitchen backsplash
- 9" deep under-mount stainless steel kitchen sink
- Commercial spring-style faucet nickel finish
- Freestanding stainless range, propane w/cast iron grates
- Stainless steel vented microwave rangehood
- Stainless steel apartment size top freezer refrigerator
- Custom chunky edge table - Kitchen
- White shaker cabinets
- Custom Rod style satin nickel hardware and soft close cabinet doors & drawers
- Ribbon staircase with w/chunky step treads
- Fiberglass 1- piece shower
- Contoured custom bath countertop with over-counter corner linen cabinet
- Beveled edge mirrored medicine cabinet
- Subway bathroom backsplash
- Ladder to the second loft with w/hardware
- Loft storage cabinet with Butcherblock top & adjustable shelves
- Custom ceiling fan w/ light

8'6" wide x 25' long x 13'5" tall
Approximately 336 sq. ft. 8,970 lb. dry weight

Total
\$112,650

*Price does not include doc fees, freight & applicable taxes. Furnishings and decor not included